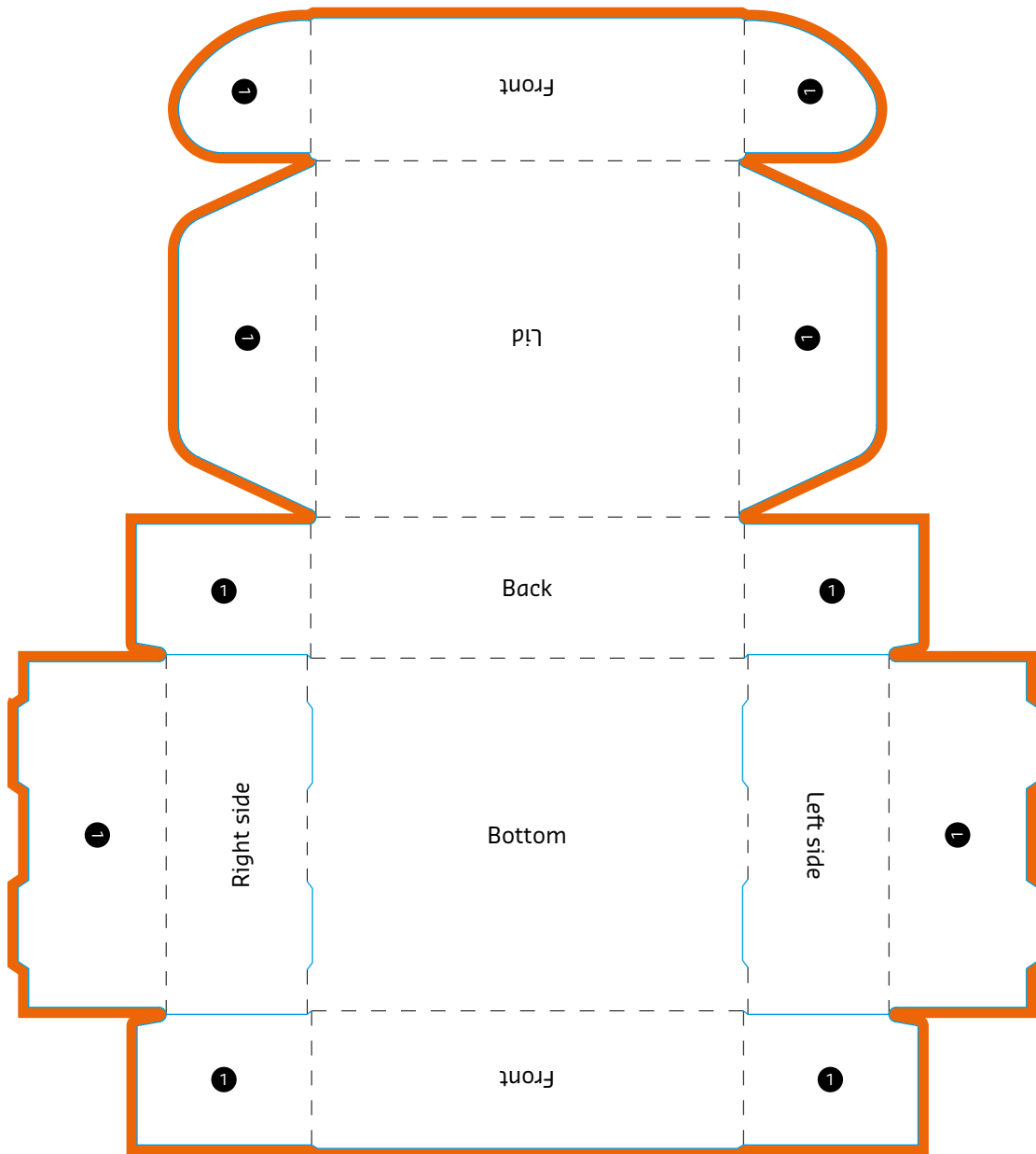




# Self Locking Tray with Hinged Lid



Please do not delete cutting die!

## EXPLANATIONS

- Information area**  
 This area is where you should place your text and images.
- Bleed (3 mm)**  
 Place backgrounds and bled-off images in this additional area in order to prevent white borders after trimming.

① Flap

--- **Folding line**  
 This is where your product will be folded.

— **Preforation line / cutting line**  
 This is where your product will be punched / cut.