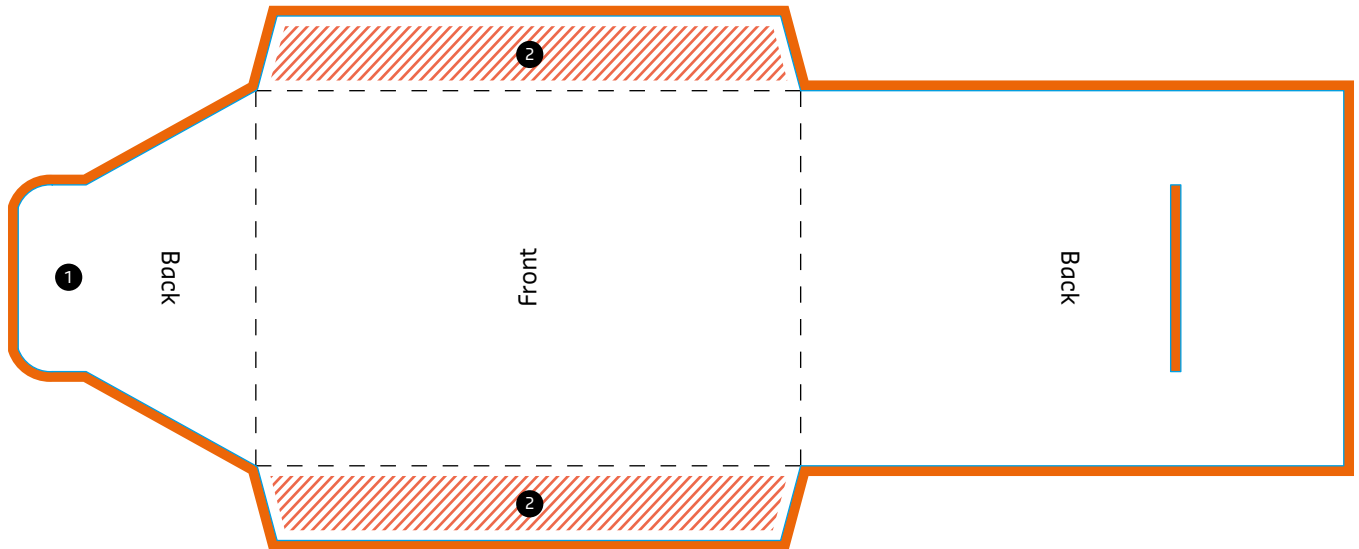






# Cardboard Sleeve, Closed


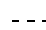



- 1 Flap
- 2 Glue flap

Please do not delete cutting die!

## EXPLANATIONS

-  **Information area**  
This area is where you should place your text and images.
-  **Bleed (3 mm)**  
Place backgrounds and bled-off images in this additional area in order to prevent white borders after trimming.

-  **Colourless area (Adhesive area)**  
Keep this area free of any designs.
-  **Folding line**  
This is where your product will be folded.
-  **Preformation line / cutting line**  
This is where your product will be punched / cut.