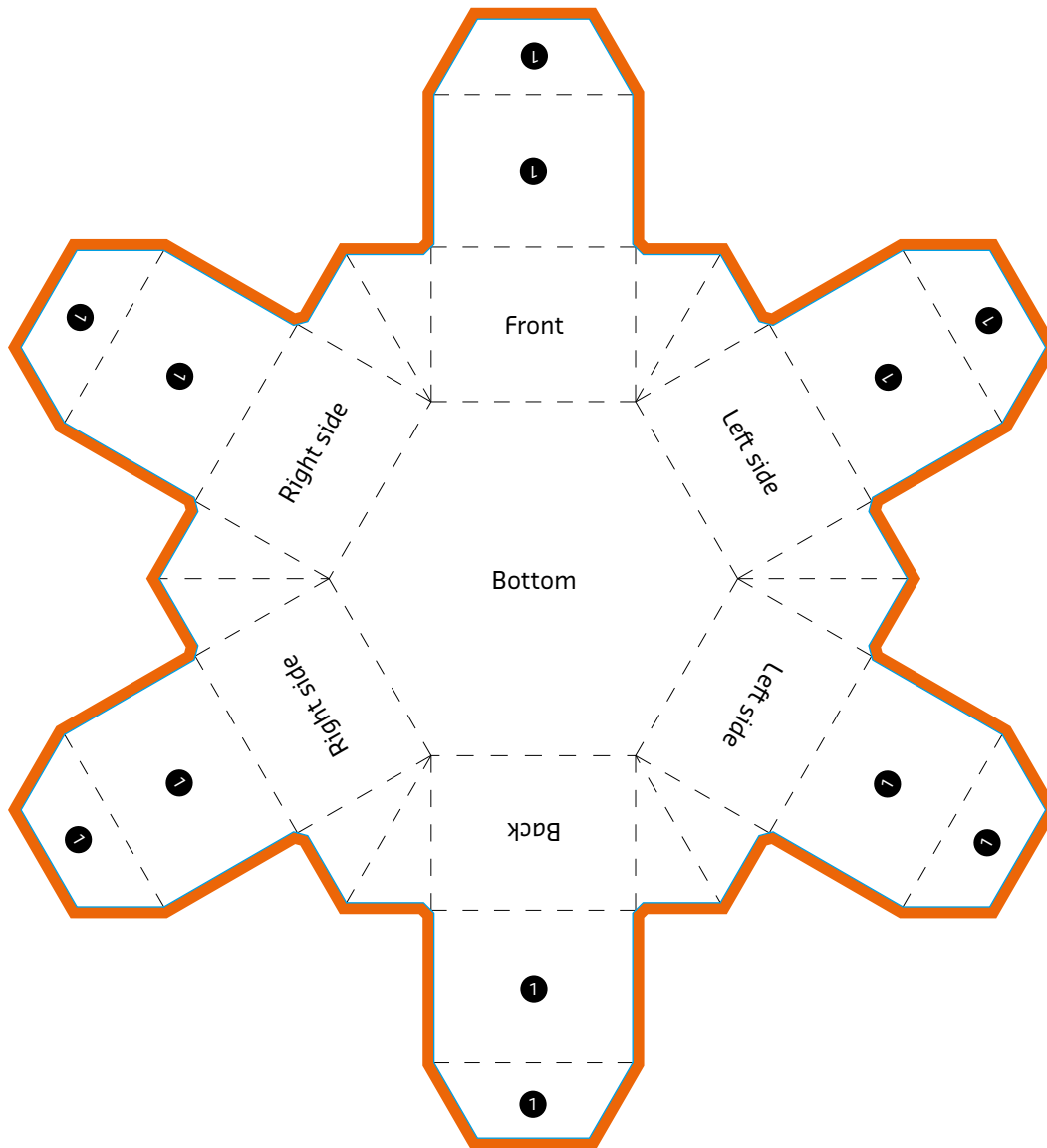




# Hexagonal Self Locking Open Tray (No Lid)



1 Flap

Please do not delete cutting die!

## EXPLANATIONS

- Information area**  
 This area is where you should place your text and images.
  
- Bleed (3 mm)**  
 Place backgrounds and bled-off images in this additional area in order to prevent white borders after trimming.

- Folding line**  
 This is where your product will be folded.
  
- Preformation line / cutting line**  
 This is where your product will be punched / cut.