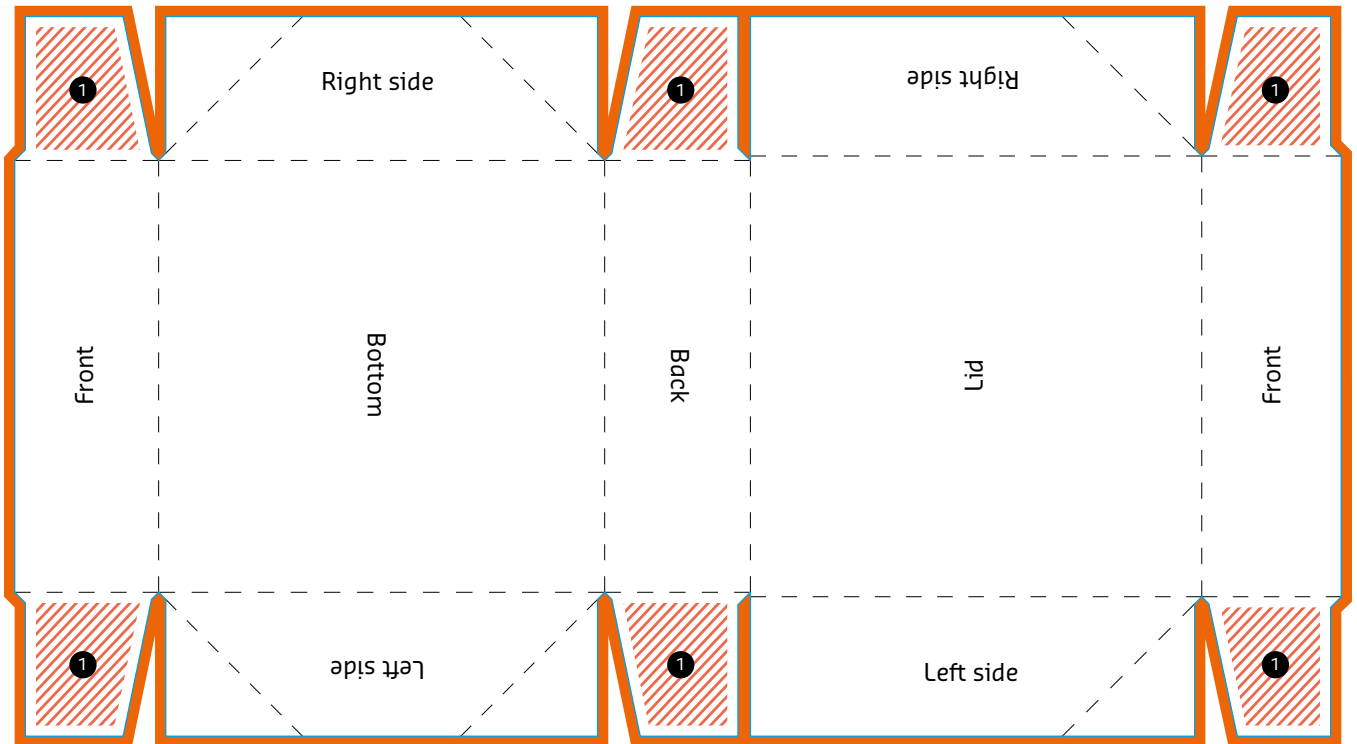




# 6 Point Glued Tray with Hinged Lid



1 Glue flap

Please do not delete cutting die!

## EXPLANATIONS

- Information area**  
 This area is where you should place your text and images.
  
- Bleed (3 mm)**  
 Place backgrounds and bled-off images in this additional area in order to prevent white borders after trimming.

- Colourless area (Adhesive area)**  
 Keep this area free of any designs.
  
- Folding line**  
 This is where your product will be folded.
  
- Preformation line / cutting line**  
 This is where your product will be punched / cut.