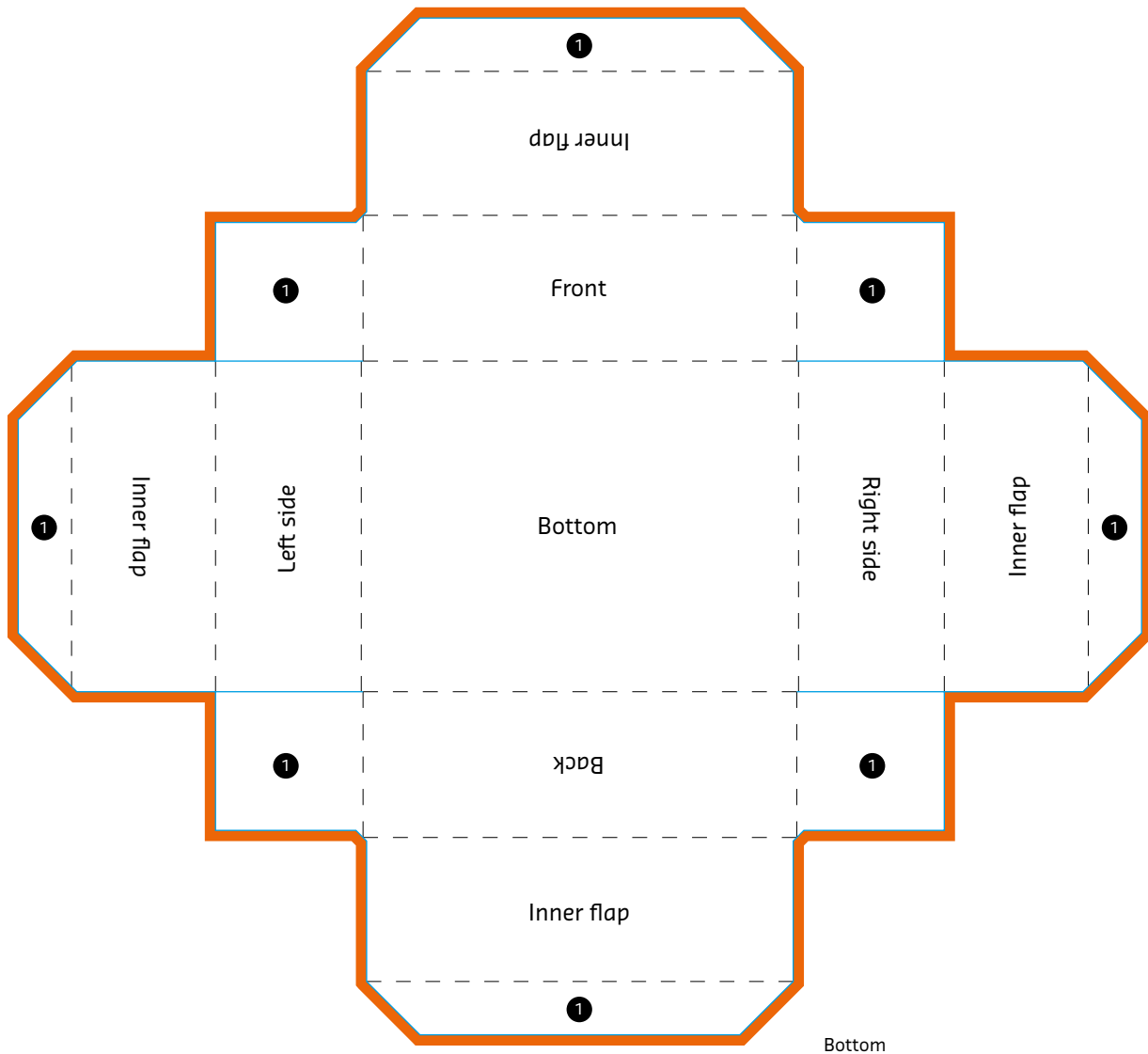




Self Locking Tray with Removable Lid



Please do not delete cutting die!

1 Flap

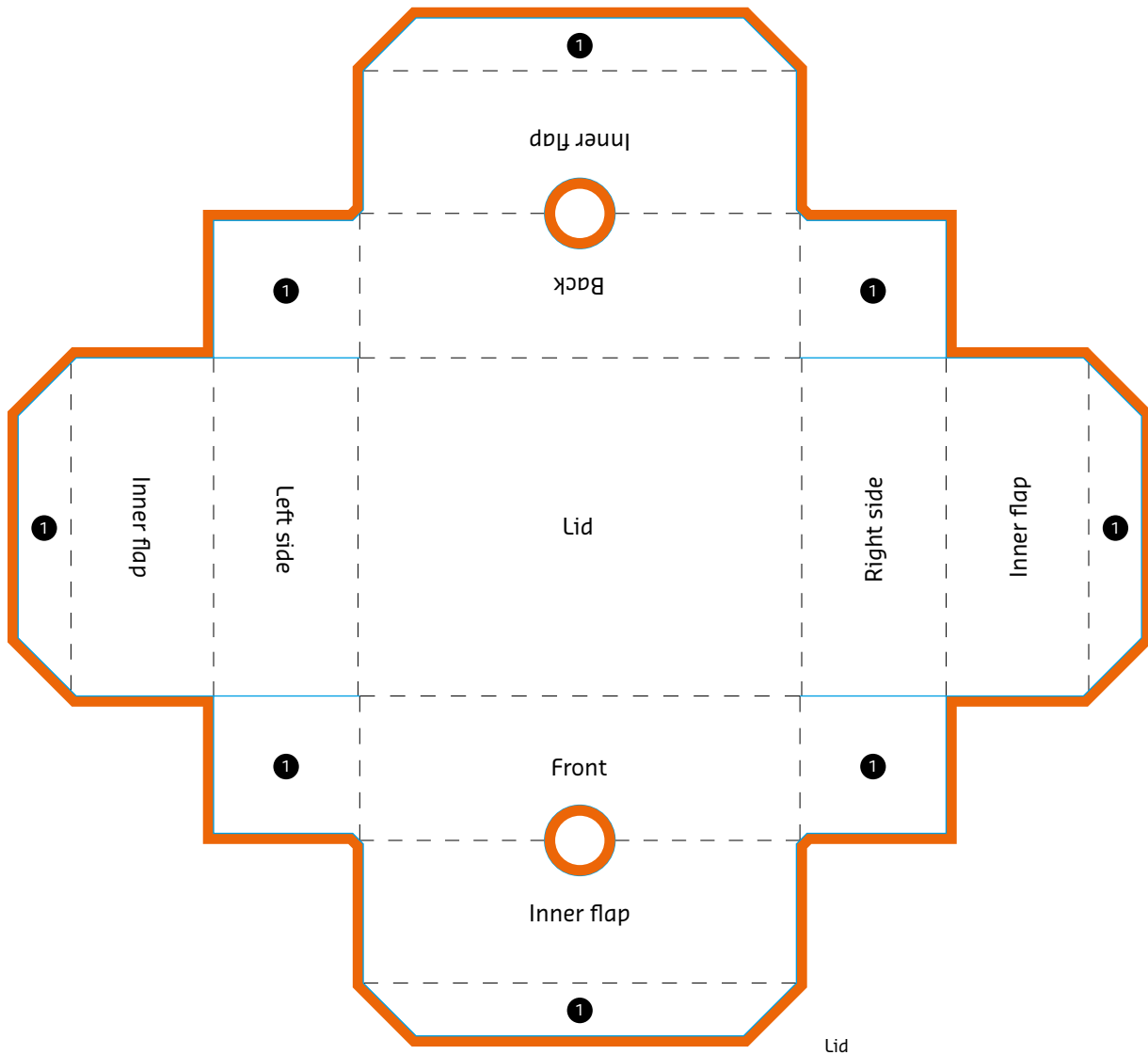
EXPLANATIONS

- Information area**
 This area is where you should place your text and images.
- Bleed (3 mm)**
 Place backgrounds and bled-off images in this additional area in order to prevent white borders after trimming.

- Folding line**
 This is where your product will be folded.
- Preforation line / cutting line**
 This is where your product will be punched / cut.



Self Locking Tray with Removable Lid



1 Flap

Please do not delete cutting die!

EXPLANATIONS

- Information area**
 This area is where you should place your text and images.
- Bleed (3 mm)**
 Place backgrounds and bled-off images in this additional area in order to prevent white borders after trimming.

- Folding line**
 This is where your product will be folded.
- Preforation line / cutting line**
 This is where your product will be punched / cut.