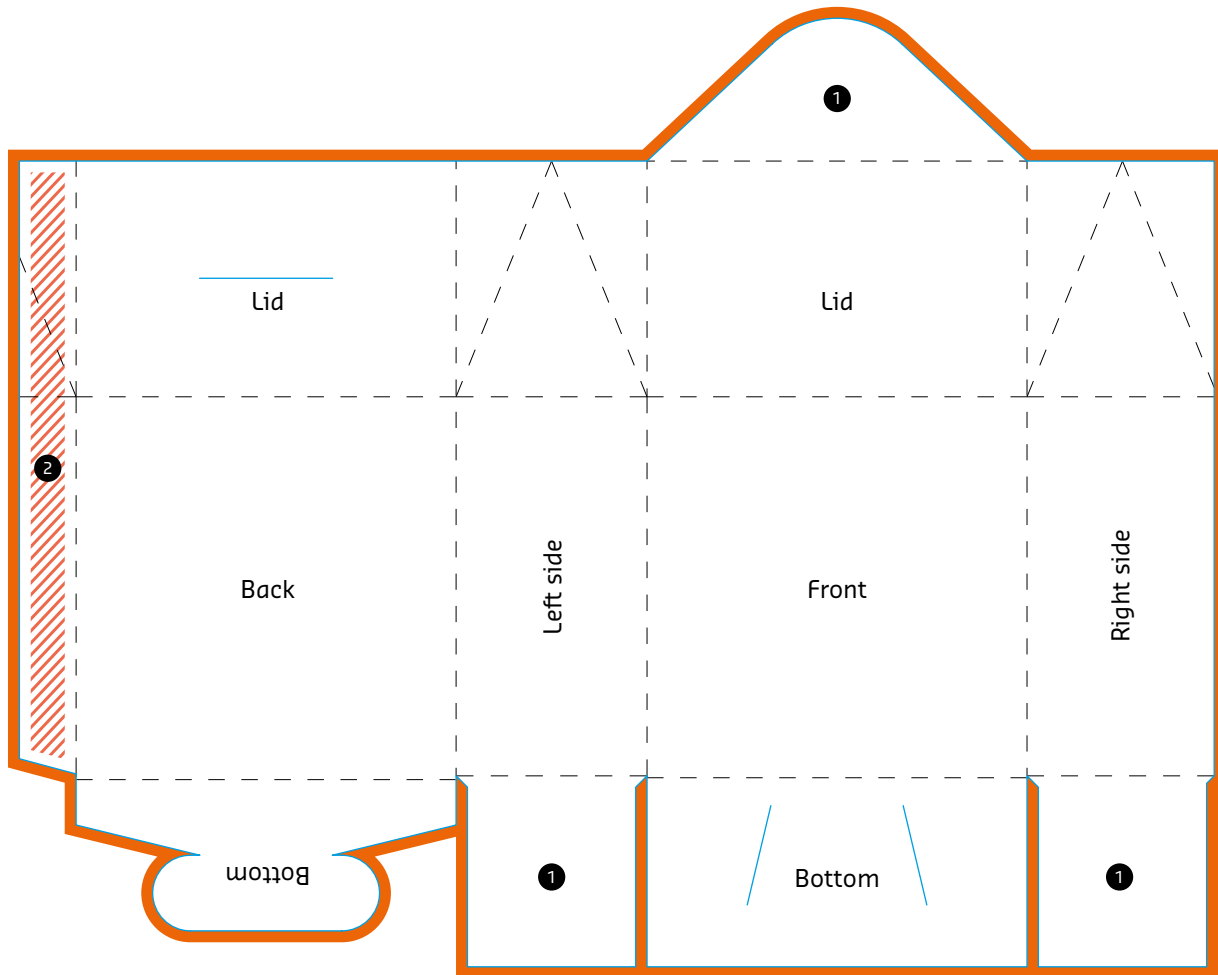




Cardboard Gift Bag with Bottom Insert and Locking Tab Top



- ① Flap
- ② Glue flap

Please do not delete cutting die!

EXPLANATIONS

- Information area**
 This area is where you should place your text and images.
- Bleed (3 mm)**
 Place backgrounds and bled-off images in this additional area in order to prevent white borders after trimming.

- Colourless area (Adhesive area)**
 Keep this area free of any designs.
- Folding line**
 This is where your product will be folded.
- Preformation line / cutting line**
 This is where your product will be punched / cut.