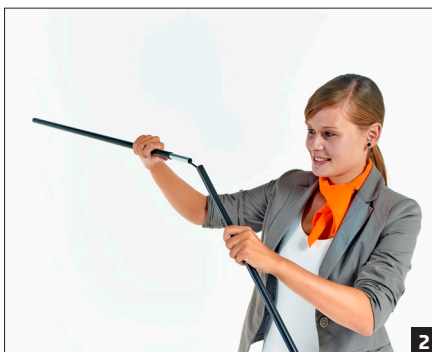




## XXL roller banner



Remove the system casing and the two three-part support bars from the transport bag.



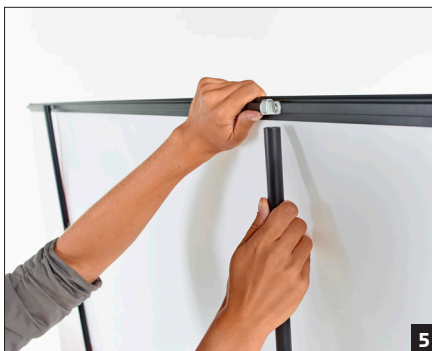
Assemble the parts of the support bar together. Make sure that the individual parts are properly pressed together.



Insert the two support bars into the openings provided on the system. Ensure that the support bars are also properly fixed into the lower notch and that they are secure.



Draw the print smoothly out of the casing and extend it straightly along the clamping rail (ideally with a second person to help you). Use your other hand to keep the support bar secure if necessary.



Using the hook, gently and carefully fix the clamping rail to the support bars.



Here is your XXL Roller banner in full size.