



Drop shape beachflag



Remove the beachflag print and the four flagpole parts from the transport bag.



Assemble the flagpole parts together. Make sure that the individual parts are properly pressed together.



On the narrow side of the flagpole, start to pull the beachflag print onto the pole over the hemstich.



Pull the beachflag print fully onto the flagpole, ensuring that it is tightly stretched.



Secure the print to the flagpole using the looped straps.



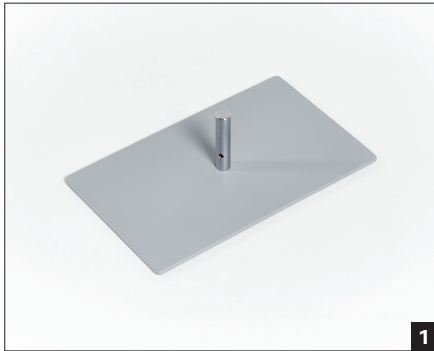
Insert the flagpole into the corresponding opening in the base until it is fixed in place.



Here is your drop shape beachflag in full size.



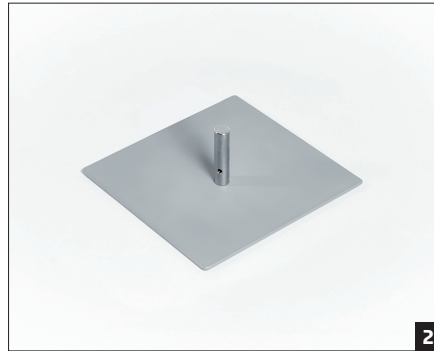
Stands



1

3.5 KG BASE

Remove the base plate, the attachment and the screw from the transport bag. Keep the base plate level, so you can connect the attachment to the plate using a Phillips screwdriver and the screw provided.



2

5.5 KG BASE

Remove the base plate, the attachment and the screw from the transport bag. Keep the base plate level, so you can connect the attachment to the plate using a Phillips screwdriver and the screw provided.



3

14 KG BASE

First, on the front of the base plate, remove the plastic plugs from the holes for the screws. Next, place the attachment on the base plate and fix it in place using a Phillips screwdriver and the four screws provided.



4

CROSS PLATE BASE

Fill the hose weight with sand or water. Open the cross plate, separate the legs and place the cross on the base. Place the filled hose weight onto the opened cross plate.



5

FLOOR PLUG BASE

Place the floor plug in the desired place on the ground. Fold down the red handles and twist the floor plug into the ground in a clockwise direction using these handles until the thread is fully fixed into the ground.