



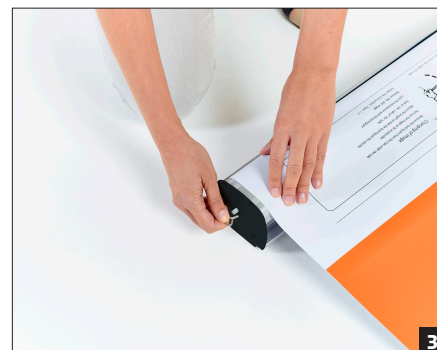
## Roller banner Economy



Remove the splint from the bottom of the casing.



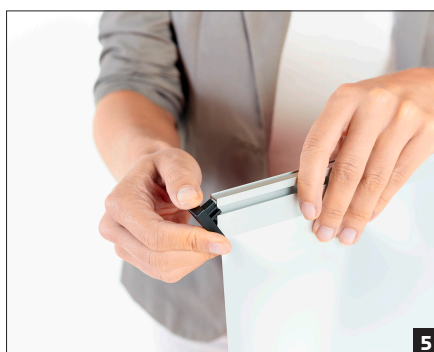
Draw the print out of the casing along the clamping rail until you can see the white transfer film.



Insert the splint into the small opening on the side of the system. Carefully allow the print to slide back into place until the splint fully disappears into the small opening. Now the print is securely in place.



Carefully remove the old print from the transfer film.



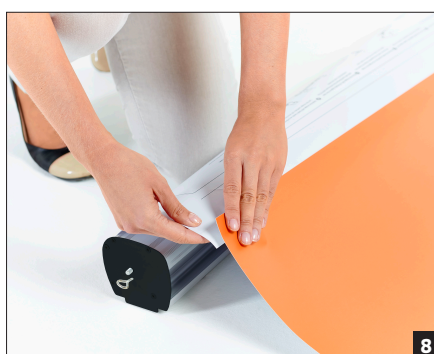
Remove the protective caps from the side of the top clamping bar.



Open the clamping rail and remove the old print.



Your new print comes provided with a double-sided adhesive strip on the bottom. To attach the print, first remove the protective film.



Starting on one of the sides, begin to attach the print to the transfer film with the adhesive strip. Then insert the top of the new print into the clamping rail. Stand the system upright and remove the splint so that the print can slide back into place.